

MARCH 3, 2026, ISSUE 5

Legacy After 60 Magazine

Legacent

Living Legacy Conservations

**Growing into
Legacent**

**Valuing the Legacent
Perspective**

**Five Background Words
That Shape a Life Lived
Forward as a Legacent**

**A Legacent
MAKES It So,
So IT Is**

LEGACENT

From the Hearthkeeper

A Legacent is an identity that grows into view rather than a role one steps into.

It forms quietly, through lived seasons, carries responsibilities, and gradually weaves experience into care for others. Many arrive here without a language for it. They sense a shift in how time feels, how decisions carry weight, how stories ask to be shared with greater intention.

Roles come with expectations. Identities arrive through recognition.

A Legacent lives from an inner alignment that has matured through practice rather than proclamation. This identity shows up in how balance is tended, how knowledge is held together, how values take shape in ordinary days, how outcomes are released, and how integrity steadies action. It carries authority without performance and influence without insistence.

This magazine exists to honour that way of being.

You will find language here, though language remains secondary. What matters more is recognition—seeing yourself reflected in the practices you already live, the questions you already carry, and the adjustments you already make. Becoming a Legacent rarely feels like becoming something new. It often feels like allowing something familiar to stride forward.

March invites this recognition gently. The pieces in this issue offer orientation for those who seek words and experience for those who prefer movement. Some readers will arrive through reflection, others through walking. Both paths matter. Both belong. As Heartkeeper, I invite you to read slowly. Pause where something resonates. Skip what does not. Carry forward what stays with you. Identity deepens through attention rather than effort. *Explore what MAKES means!*

If you find yourself selecting with greater care, listening more widely, and living what matters now, then the work is already underway.

WELLcome to this season of becoming.

Dr. Stephen Hobbs
WELLth Movement

Table of Contents

Editor: Dr. Stephen Hobbs

Issue 5 - for display!

Authors of submission, noted
in the magazine

Publisher: WELLth Movement

Section 1

Stepping Into Legacent 02

Section 2

Five Background Words That
Shape a Life Lived Forward as
a Legacent 05

Valuing the Legacent
Perspective 11

A Legacent MAKES It So, So IT
Is 16

Section 3

Legacent and Whispers in the
Willows 10

Contact Us 21



Share Wisdom
Shine Light
Stay Found
Stride Forward
Set-Up

Five Background Words That Shape a Life Lived Forward as a Legacent

Becoming a Legacent is a way of living that emerges as experience, responsibility, and care for others to move together. It unfolds through attention rather than announcement, and through presence rather than position.

A **Legacent** lives from legacy now—through daily decisions, relationships, stories, and contributions that carry meaning beyond the self. This way of being develops gradually, shaped by how one decides to engage with life as it is lived.

Five words quietly shape this way of being: *Equilibration, Consilience, Reification, Precession, and Coherence*. These words are guides rather than instructions. They guide a Legacent to recognize what is already unfolding and decide how to move forward with intention, clarity, and care.

Equilibration sits at the heart of becoming a Legacent. It refers to dynamic balance—the ongoing adjustment between caring for oneself and contributing to others. A Legacent understands that legacy grows through sustainability rather than sacrifice. Energy, health, and attention matter. Time, effort, and money are gifted with discernment rather than urgency. Through equilibration, generosity becomes enduring. Life remains lived with vitality and responsiveness. Balance here is active, alive, and continuously refined.

Where equilibration sustains the body and spirit, **consilience** strengthens understanding. A Legacent draws wisdom from many sources: lived experience, formal learning, intuition, cultural memory, and close observation of the natural world. These ways of knowing are woven together rather than separated. Consilience allows complications to be held without collapsing into simplicity. Decisions gain depth. Stories gain texture. In this integration, a Legacent becomes a bridge—linking ideas, generations, disciplines, perceptions, and perspectives into shared meaning.

Reification brings intention into form. A Legacent recognizes that values matter most when they become visible and usable. Wisdom takes shape as a story shared, a practice modelled, a contribution sustained, or a project offered. Reification invites movement from abstraction into lived expression. At the same time, a Legacent remembers that what is created remains adaptable. Forms can evolve as conditions change. Legacy stays alive because it remains responsive, shaped by real use rather than fixed ideals.



Even with care and clarity, outcomes remain unpredictable. This is where **precession** becomes essential. Precession describes how influence often travels sideways, producing effects beyond direct intention. Teaching shapes the teacher. A story told for one intention lands differently for each listener. A choice made quietly ripples outward across relationships and systems. A Legacent learns to trust this indirect movement. Attention shifts from controlling results to stewarding the integrity of action. Legacy unfolds through participation rather than force.

Holding all of this together is **coherence**. Coherence describes alignment between values, choices, actions, and stories. It brings steadiness without rigidity and clarity without performance. When coherence is present, others sense it immediately. Trust deepens. Stories make sense. Contributions feel grounded. A Legacent carries authority without assertion because life itself reflects alignment. Decisions require less explanation. Integrity becomes visible through consistency.

Together, these five words describe a living orientation rather than a destination. Becoming a Legacent means noticing where balance asks for attention, where knowledge seeks integration, where values want expression, where outcomes invite release, and where alignment supports integrity. This way of living emphasizes discernment over accumulation and presence over projection. Effort gives way to effectiveness. Intuition matures into being.

On Paper

these words
have many letters

So What?

What Else?

Now What?

circling them
provides no nourishment

Instead, diving in
finding the essentials
the frameworks

the actions
necessary to feed you

that is Important

then to wonder
to wander
therein is the gift
we ignore

as to Integrate
them is a calling
sparked by
purpose
Intention
resilience

conversation
a belief Invested
in
tomorrow today



A Legacent understands that legacy develops through ordinary days as much as defining moments. Small decisions compound. Relationships deepen. Stories settle into shared memory. Contributions evolve alongside capacity and season. Through equilibration, consilience, reification, precession, and coherence, legacy becomes a lived practice rather than a future concern.

A Legacent no longer asks what will remain someday.

A Legacent asks how life is being lived today—and lives accordingly.



A Legacent Walk: Five Steps for Living the Legacy You Intend to Leave

(Guided Reflection)

This walk is not about problem-solving or planning. It is about **recognition**. Walk alone or with others. Outdoors is ideal, but not required. Let movement do some of the thinking.

Before You Begin

Walk at a natural pace. You are not here to arrive. You are here to notice. Pause briefly at each stop, then continue walking. Let reflections accompany you rather than interrupt you.

Stop One — Equilibration: Walking Your Balance

As you begin, notice your body. Your breath adjusts. Your pace settles. This is equilibration—a constant, responsive balance.

As you walk, reflect quietly:

Where in my life am I adjusting rather than deciding?

What feels well-balanced between caring for myself and contributing to others?

Where might I be giving too much—or too little?

A Legacent does not force balance. They attend to it.



Stop Two – Consilience: Walking with Many Ways of Knowing

Widen your awareness. Sounds, textures, memories, thoughts all arrive together. None need to dominate.

Reflect as you walk:

What ways of knowing guide me—experience, intuition, learning, values?

Where might I be relying on only one voice when others are present?

What becomes possible when these ways of knowing travel together?

A Legacent listens widely.

Stop Three – Reification: Walking What Takes Shape

Notice something concrete along the path—a stone, a sign, a bench, a tree tended by human hands.

Reflect as you walk:

What values of mine already show up in visible ways?

What wisdom remains unshared or unnamed?

What small form could one value take—now?

A Legacent allows meaning to take shape without fixing it forever.

Stop Four – Precession: Walking the Side Effects

Notice what you did not intend to notice—a memory, a shift in light, a feeling that arrives uninvited.

Reflect as you walk:

Where have my actions mattered in ways I did not plan?

What have others taken from me that I did not intend to educate?

Where might I loosen my grip on outcomes?

A Legacent trusts that influence moves beyond sight.

Stop Five – Coherence: Walking in Alignment

As the walk nears its end, notice your rhythm. Body, thought, and feeling may feel more aligned.

Reflect as you walk:

Where do my values and actions already align?

Where do I feel quiet tension?

What single adjustment would increase integrity?

A Legacent chooses direction over perfection.



After the Walk

Pause. Breathe once with intention.

Ask gently:

What am I already living that deserves to be recognized as legacy?

Carry that awareness with you because of a letter you wrote.



A Letter from a First-Time Walker, Solace Grove

I almost turned back.

I had seen others walking this path before—slowly, as if they had nowhere else to be. I told myself I was just stretching my legs, not *doing anything meaningful*. That felt safer.

At first, I kept checking my phone. Habit. Then the signal dropped near the bend in the trail, and I felt oddly exposed. Without distraction, I noticed how tense my shoulders were, how fast my thoughts moved compared to my feet. I don't know what I expected to happen. Nothing dramatic did. But somewhere between the spruce stand and the old fence line, I realized I was listening to the gravel underfoot, to my breath, to a question I'd been avoiding. What stayed with me was this: I don't need to know what I'm leaving behind to start paying attention to how I'm living now.

That surprised me.

I'm not sure I belong among the others here yet. They seem steadier. More practiced. But the path didn't ask me to prove anything. It just held me long enough to notice myself walking.

I think I'll come back tomorrow.

Not because I understand any of this—
but because something shifted, and I don't want to lose it.

Chen, Entrepreneur



Reflections of Wisdom

Legacent and Whispers in the Willows

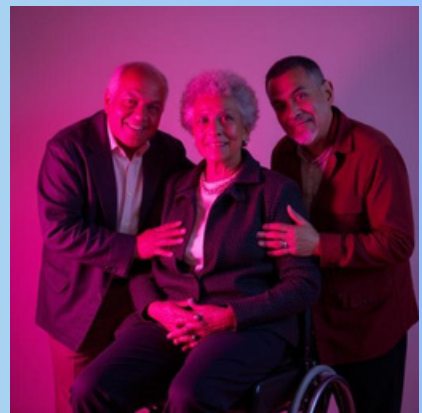
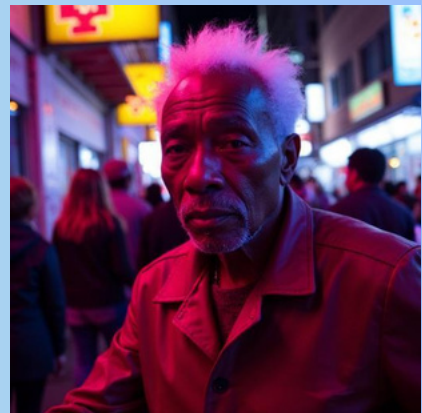
In the quiet by the river
a Legacent stands still.
The willows lean toward the water.
Their thin leaves move in the wind.
Soft whispers fill the air.

The whispers do not shout.
They speak in gentle waves.
They tell of seasons passing.
They tell of roots holding firm.
They tell of change that grows slow and strong.

The Legacent listens with care.
Years of living sit in the heart.
Hands have taught and guided many.
Feet have walked long paths.
Now the willows speak back.

They say, keep shaping what matters.
They say, small acts travel far.
They say, your steps leave traces.
They say, others will follow the path.
They say, steady work becomes shelter.

The river keeps moving.
The willows keep whispering.
The Legacent keeps serving.
Life flows from one to another.
So it is, and it carries on.



Rosa [Librarian Solace Grove]

Invitation to Readers:

Share your creative reflections—poems, sketches, or nature photos—linked with Living Legacy After 60. Use the Contact Form to send your reflection and/or to ask more: wellthmovement.com/contact __Subject line: Creative Reflections

Valuing the Legacent Perspective

ACTION REFLECTION

Integrating Personality and Person-Abilities

As a Legacent—someone who lives from the legacy they intend to leave—you will learn that strong legacy work rests on two foundations. One foundation is personality. The other is person-abilities. When these two are integrated with care, legacy becomes steady, sustainable, and deeply human.

This insight became clearer one afternoon in Solace Grove. Lone was sitting on the bench beside Walter, his mentor. The trees were still, and the pause between words carried weight.

Lone had been unsettled for weeks. He had not completed a formal personality assessment in more than ten years. A quiet question followed him: Am I still living from who I am today, or am I relying on an older version of myself?

He felt a subtle embarrassment in even asking. As a mentor to others, he guided reflection with confidence. Yet privately, he sensed drift. He wondered whether he was honouring growth or protecting familiarity.

Walter listened without interruption. He did not rush to offer answers. Instead, he invited Lone to sit longer with the tension.

**“Identity is not preserved through memory.
It is strengthened through disciplined development.”**

That sentence landed slowly. Lone realized that the issue was not whether he had taken a recent test. The deeper issue was whether he was actively developing his person-abilities to express who he is becoming.

Personality: Your Home Base

Personality reflects stable patterns of thinking, relating, deciding, and responding to pressure. It shapes energy, curiosity, and motivation. For adult educators, it influences how you teach, mentor, and lead.

Walter explained that personality provides a home base. It anchors contribution in authenticity. When you understand your patterns, you design a pathway that aligns with your energy rather than working against it.

Lone could see that he valued inquiry and reflection. He also saw that comfort can quietly turn into avoidance. Reflection without forward motion had begun to feel safe, even respectable.

That awareness created friction. It also created a possibility.

Person-Abilities: Your Development Path

Person-abilities are skills and capacities you can strengthen over time. They include mapping, action, knowledge organization, engagement, and safety practices. These abilities translate identity into structured contribution.

Walter introduced Lone to the MAKES framework as a guide for growth. He explained that personality gives direction, and person-abilities create movement. One grounds you; the other extends you.

Lone recognized a pattern. He valued who he is. He spoke often about development. Yet he had allowed his own structured growth to pause.

**“Valuing who you are today requires strengthening
who you are becoming.”**

That sentence carried weight. To move from mentor to Legacent required more than insight. It required disciplined development.

The MAKES Framework: Integration in Motion

M – MAP

Mapping begins with inquiry. You identify what you know, what you value, and where your experience can serve others. For reflective personalities, mapping feels natural.

Growth begins when mapping leads to forward motion. Walter encouraged Lone to set defined timeframes for planning. Insight becomes powerful when it leads to visible steps.

Lone began drafting a simple pathway for his mentoring practice. For the first time in months, his thinking moved toward structure.

A – ACTION

Action converts insight into contribution. Reflective educators benefit from structured triggers such as deadlines or public commitments.

Lone is committed to one defined action after each mentoring conversation. Each commitment created momentum. Each action strengthened confidence. He noticed that movement eased doubt. Action clarified identity more than reflection alone.

K – KNOWLEDGE

Knowledge becomes legacy when it is organized and transferable. Curiosity generates insight. Structure makes insight usable.

Lone reviewed years of notes and teaching outlines. He began shaping them into simple, repeatable frameworks. Experience started to look like assets. This shift reduced his internal tension. He was no longer leaning on past identity. He was shaping the present contribution.

E – ENGAGEMENT

Engagement connects legacy to people. Some educators prefer depth in one-to-one conversations. Others expand into wider circles.

Lone realized he had limited his engagement to familiar spaces. Through deliberate practice, he would widen his reach. Broader conversations strengthened his clarity.

Expansion felt stretching, yet purposeful. Growth carried both joy & courage.

S – SAFETY

Safety anchors integration. Physical, emotional, safety systems, and safer practices create conditions for sustainable development.

Walter reminded Lone that development requires grounding. Stretching without safety creates instability. Safety with growth creates resilience.

**“Growth without grounding creates strain.
Grounded growth creates legacy.”**

Lone felt the truth of that statement. His next step was not reinvention. It was integration.

The Legacy Pathway: Five Phases

Phase 1: Personality Recognition

You name and value your natural patterns. Clarity replaces assumption.

Phase 2: Legacy Clarification

You define the contribution you intend to make. Intention sharpens focus.

Phase 3: Person-Ability Strengthening

You develop abilities that support your intention(s). Growth becomes structured.

Phase 4: Structured Contribution

You organize insight into repeatable (mentoring) practices or frameworks. Experience becomes transferable.

Phase 5: Mentor to Legacent Transition

You shift from guiding individuals to shaping structured legacy assets. Contribution extends across generations.

Lone understood that strengthening his person-abilities would carry him forward. The pathway from mentor to Legacent required deliberate integration.

The Five Live Legacent Advantages

1. Energy Stewardship

Contribution aligns with natural strengths. Vitality is preserved.

2. Structured Impact

Experience becomes organized and usable. Others can apply and extend your work.

3. Development Momentum

Disciplined growth replaces quiet drift. Confidence deepens through action.

4. Expanded Influence

Engagement practices widen reach. Mentoring conversations evolve into legacy assets.

5. Sustainable Contribution

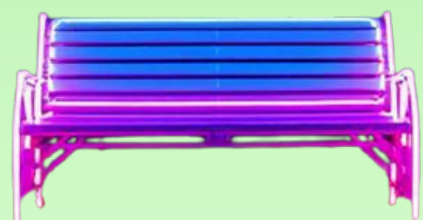
Safety and equilibration create rhythm. Contribution remains steady across seasons.

The Bench in Solace Grove

When Lone stood from the bench, he carried a new resolve. His tension had not disappeared. It had shifted into direction.

He saw clearly that valuing who he is today requires visible growth. Through MAKES, he found a structured pathway for that growth.

The journey from mentor to Legacent is not dramatic. It is disciplined. It unfolds through integration, one step at a time.





The Best for Conversation

Dr. Stephen Hobbs,
Legacent

A Legacent MAKES It So, So IT Is

The Journey from Transactions to Transcendence

When a Legacent says, "I MAKES it so," something shifts. This is the move from waiting for shift to shaping shift. It is the disciplined use of person-abilities: Map, Action, Knowledge, Engagement, and Safety. These abilities turn vision into lived experience.

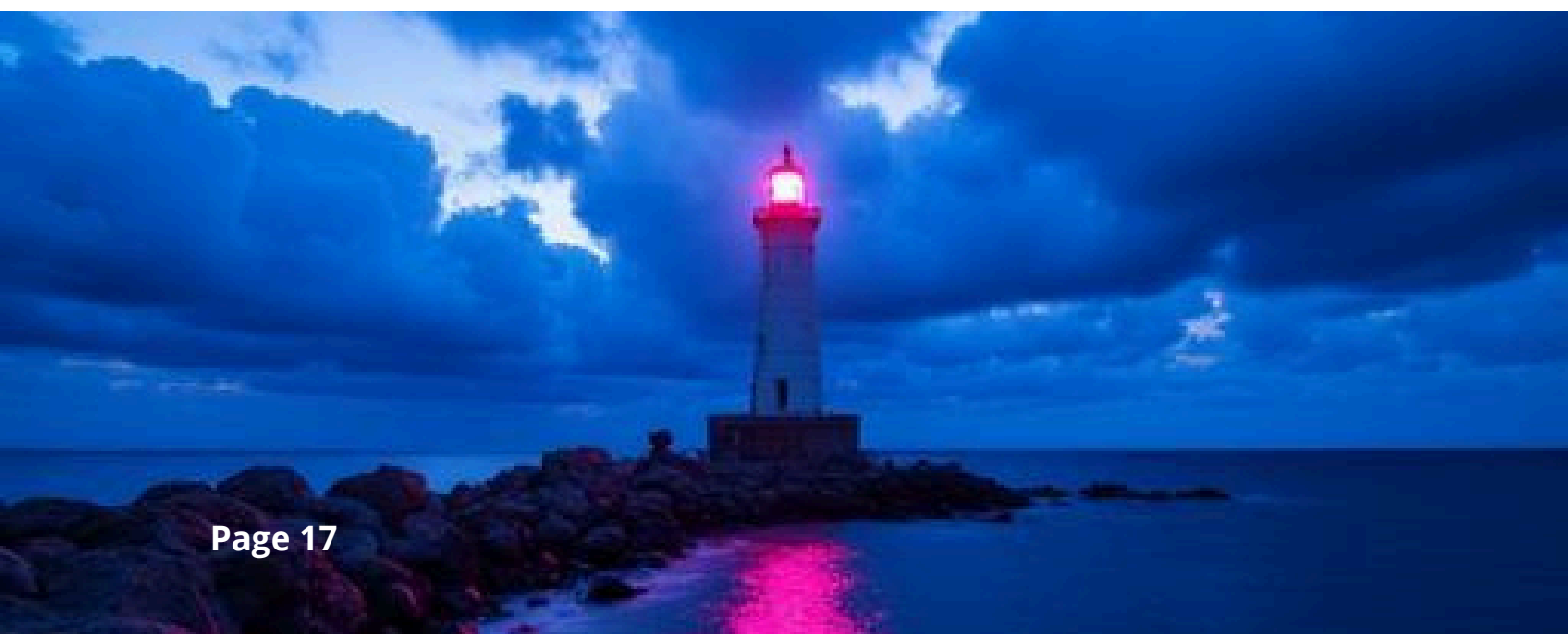
“So **IT** is” follows as a statement of responsibility. What we shape becomes real in the communities we serve. What becomes real creates the next level of possibility. Legacy grows through this cycle of intention and follow-through.

This declaration marks a movement. It moves us from simple exchanges toward lasting influence. It moves us from activity toward meaning. It moves us from effort toward impact that carries forward.

From Transactions to Transformation

Transactions are part of everyday life. We teach and receive payment. We volunteer and receive appreciation. We attend events and gain recognition. Transactions serve a purpose. They build connections and provide structure. They create entry points for deeper work. Yet transactions alone rarely create a lasting legacy.

Transformation begins when a Legacent applies MAKES person-abilities with intention. Teaching becomes identity-shaping. Conversation becomes commitment-forming. Engagement becomes stewardship building. Transformation shifts how people see themselves in relation to the ecosystem. It deepens awareness. It strengthens ownership. It invites responsibility that lasts beyond the moment.



The MAKES Bridge

Map encourages us to see the difference between surface activity and meaningful shift. It clarifies patterns and reveals deeper opportunities. It shows where transformation can take root.

Action converts vision into steady steps. It organizes energy into practice. It ensures that insight becomes structure.

Knowledge provides depth. It supports wise guidance. It keeps transformation grounded in lived experience rather than trend.

Engagement builds trust. It fosters relationships in which growth can occur safely. It invites shared ownership of outcomes.

Safety creates conditions where people feel secure enough to grow. It encourages honest dialogue. It allows shift to take place without fear.

An educator living this way shifts from delivering information to guiding discovery. Learners recognize their own ecosystem identity. Commitments arise from within rather than being assigned from outside.

From Transformation to Transcendence

Transformation focuses on people and situations directly in front of us.

Transcendence expands beyond direct contact. It is the ripple effect of influence across time and place.

When transformation spreads, it forms patterns. Those patterns shape culture. Culture begins to carry the work forward.

Transcendence appears when systems/ecosystems begin to grow on their own. Communities continue the conversation. Practices continue to develop. Influence extends beyond the original setting.

The MAKES Elevation

Map expands to reveal how local actions connect to larger ecosystem patterns. It sees relationships between personal change and community evolution. It recognizes interdependence.

Action shifts toward multiplying impact. Efforts create models that others can adapt. Practices become frameworks that others can carry forward.

Knowledge matures into wisdom. Wisdom travels across settings. It serves varied contexts while holding steady principles.

Engagement widens into networks. Relationships connect across generations. Conversations spread through shared leadership.

Safety strengthens institutions and cultures. People feel supported in contributing. Growth continues without reliance on a single person.

A Legacent who once guided a small group may see that group launch initiatives of its own. Those initiatives influence schools, community programs, and environmental efforts. The original act of transformation becomes part of a larger movement.

The Dynamic Cycle: So **IT** Is

Transactions create trust and structure. They provide the starting place for deeper engagement. Without structure, growth lacks footing.

Transformation builds credibility and connection. It deepens commitment. It prepares the ground for wider influence.

Transcendence renews the cycle. It opens new opportunities for meaningful exchanges. It invites stronger transformation at the next level.

This pattern forms a spiral. Each cycle increases capacity for service. Each level expands the reach of legacy.

Moving Forward

The journey from transactions to transformation to transcendence reflects the full expression of Legacent potential. It calls adult educators to serve with structure and intention. It connects personal fulfillment with ecological flourishing.

“A Legacent MAKES It So, So IT Is” becomes a living discipline. It turns career activity into legacy creation. It transforms individual effort into shared movement. It anchors influence in a steady, structured contribution.

Living the Legacent Declaration

A Legacent lives this declaration through **daily** awareness. Each morning can begin with a simple question: How will I shape meaningful shift today? Each evening can close with reflection: What now exists because I decided to act?

Weekly reflection clarifies focus. Are current efforts mostly transactional, transformational, or transcendent? Honest review guides the growth of the MAKES person-abilities.

Monthly planning strengthens structure. Relationships can be guided from exchange toward transformation. Transformations can be supported toward wider influence.

Annual visioning reconnects personal effort with collective movement, and individual work contributes to the broader Legacent community. Legacy becomes shared rather than isolated.



MAKES Person-Abilities

Five developed capacities that support legacy action:

- **Map** – Seeing patterns and direction clearly.
- **Action** – Turning insight into structured steps.
- **Knowledge** – Drawing from lived experience and disciplined learning.
- **Engagement** – Building relational trust and shared ownership.
- **Safety** – Creating conditions where growth can occur with confidence.

Transactions

Structured exchanges that build trust and provide resources.

Transformation

Lasting shifts in identity, valuing, and responsibility.

Transcendence

Influence that extends beyond direct contact and continues shaping systems over time.

MARCH 3, 2026, ISSUE 5

Legacy After 60 Magazine

Legacent

Living Legacy Conversations

Connect With Us

Substack: stephenhobbs.substack.com

YouTube: youtube.com/@legacyafter60

LinkedIn: linkedin.com/in/stephenhobbs-legacymentor/

Contact: wellthmovement.com/contact

Website: wellthmovement.com

Legacent Magazine:
wellthmovement.com/legacent-magazine

WELLth Movement

Living legacy you intend to leave through
gifting, contribution, and conversation!

Next Issue: April 1, 2026

